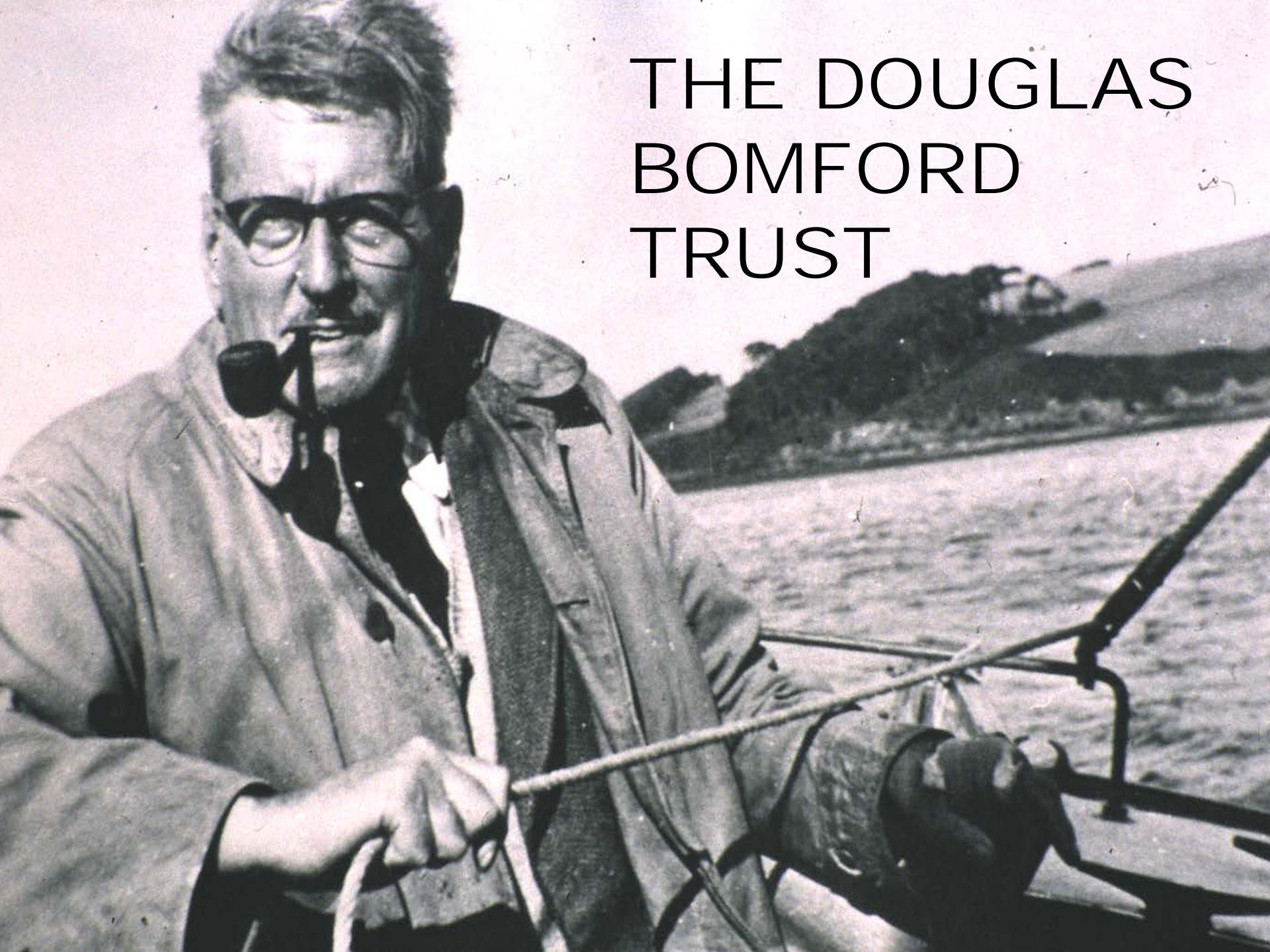


THE DOUGLAS BOMFORD TRUST



The Douglas Bomford Trust

www.dbt.org.uk

The only UK charity
focused on Engineering for
Agriculture

**Founded in 1972, in the name of
Douglas Bomford
*Agricultural Engineer, Farmer,
Innovator, Inventor, Designer,
Entrepreneur*
by his family and the Company**

**With additional donations arising from the
‘Howard Trust’ and from the more recent closure
of Silsoe Research Institute**

The Trust's Aims

- ❑ To support and advance the science, practice and profession of agricultural engineering, especially in the United Kingdom
- ❑ To enable capable and talented young engineers to realise their full potential by funding post-graduate study, projects, travel scholarships, student membership of IAgRE
- ❑ To provide funding for research and capital projects in furtherance of the Aims

DBT and IAgRE

- ☐ From its earliest days the Trust has been closely associated with the Institution
- ☐ It now shares the Institution's Office on the Cranfield Campus
- ☐ It has proved to be a very successful and symbiotic partnership
- ☐ A majority of Trustees have been IAgRE members

The Trust provides opportunities

- ☐ **It can, and does, support new ventures**
- ☐ **Its support applies leverage for larger funds**
- ☐ **It adds prestige and endorsement to a project**
- ☐ **It adds scope and value to existing projects**

The Trust's Resources

- ☐ **Capital invested by 3 fund management services**
- ☐ **Income providing an annual disbursement of c £100k**
- ☐ **Voluntary Secretary and part-time Administrator**
- ☐ **Board of Trustees with a range of relevant experience**

Some of the challenges

- ☐ Using funds to make the most effective contribution to UK agricultural engineering
- ☐ Investing in the right people and projects
- ☐ Monitoring progress and ensuring that the outcomes are delivered

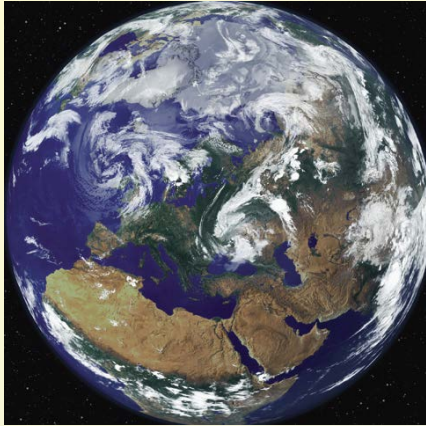
Achievements in the last decade

- ❑ Supported over 20 post graduate and engineering doctorate students who now have leading roles as lecturers, researchers, directors and consultants.
- ❑ Sponsored more than 150 study tours to international conferences, events and businesses.
- ❑ Awarded over 30 prizes to reward excellence.

Achievements in the last decade

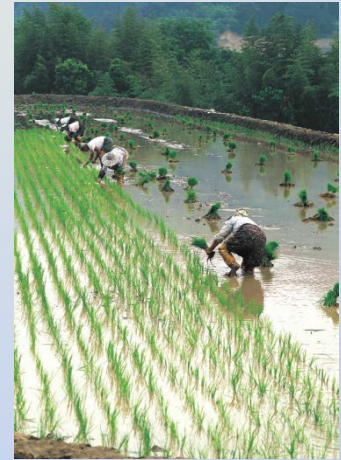
- ☐ Made awards to 25 undergraduate and college students to support special projects.
- ☐ Introduced over 2000 students to the culture and benefits of a professional institution.
- ☐ Stimulated and part funded a new Chair in engineering and mechanisation at the Royal Agricultural College
- ☐ Provided critical seed corn funding for the new engineering block at Harper Adam's University

Some recent examples of projects supported by the Trust



**The Future of Food and Farming:
Challenges and choices for
global sustainability**

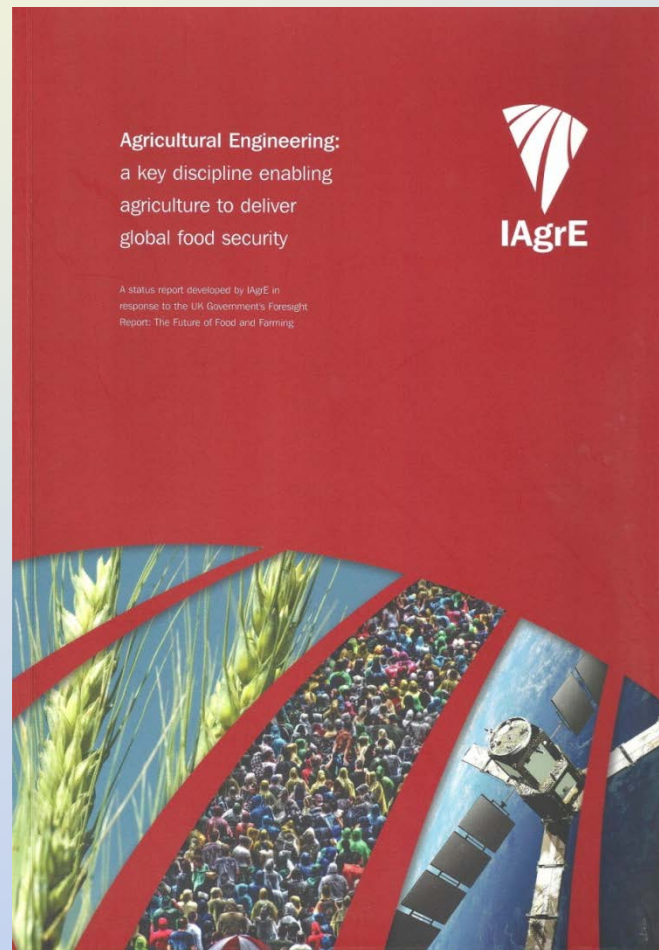
Foresight Challenges



The response of the IAgRE, to the Government sponsored Foresight Report on the Global Food and Farming Futures Project, highlights the vital importance of agricultural engineering in responding to the challenges it sets out.

The IAgRE input was warmly welcomed and endorsed by Prof Sir John Beddington, Chief Scientific Adviser to HM Government.

DBT trustees contributed to this report and provided some of the funding



Preparing for Tillage & Traffic Experiment

Emily Smith – 2 year PhD project



Harper Adams
University College



Controlled and Low Ground Pressure Tillage and Traffic Experiments at HAU. Jan 2013

New Agricultural Engineering building in background



Even as dusk falls a former DBT Scholar, Dr Paula Misiewicz, is not too proud to get into the art of soil mechanics!

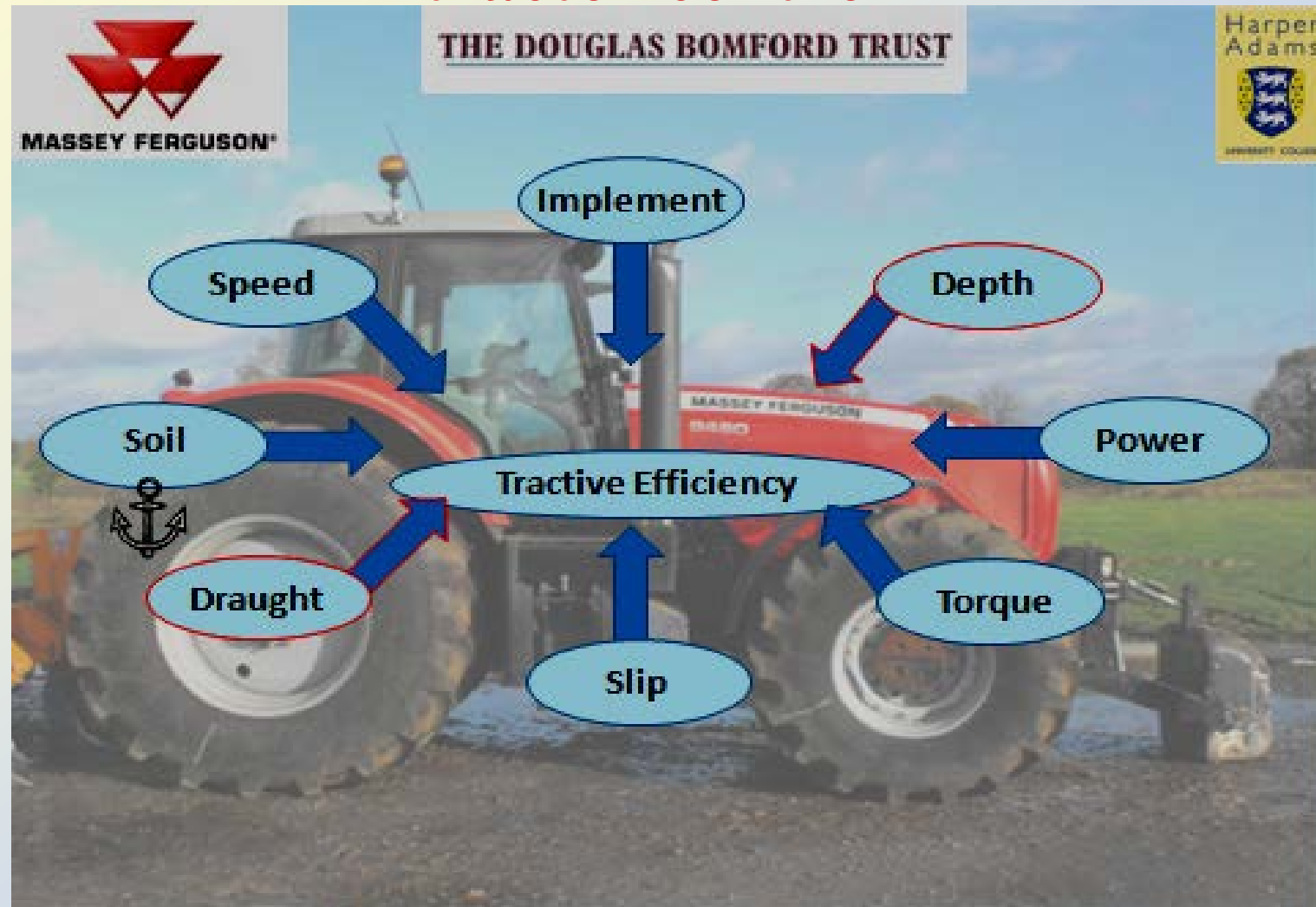


Precision High Speed Mechanical Weeding DBT funding in 1990's



Tillett and Hague

PhD project by James Ward: Optimisation of tractor control



Automated Agrochemical Application PhD Project – Dr Sven Peets

Controlled applicator filling

- Avoidance of agrochemical loading errors
- Add prescribed amounts
- Auto Record data
- Reduce total time for data transfer
- Food safety and environmental benefits



Undergraduate student awards 2013



Undergraduate prizes



The New Agricultural Engineering Building at Harper Adams University



Douglas Bomford Chair in Applied Farm Mechanisation and Management

Professor Toby Mottram



Working together to make a difference for UK agricultural engineering

- ☐ **To achieve the best outcome means selecting the best applicants and the best proposals**
- ☐ **Then to monitor performance and progress to ensure delivery**
- ☐ **Finally, to deliver real benefits means ensuring that the best outcomes are carried through to practice**

**That is what the Douglas
Bomford Trust seeks to do**

THE DOUGLAS BOMFORD TRUST

